

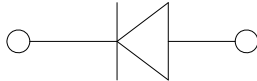
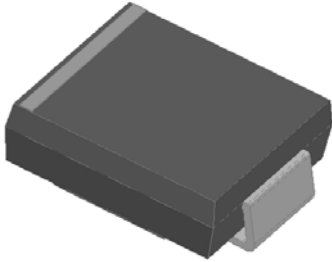


60' - \$4 7+58 60' - &\$4

RoHS
COMPLIANT

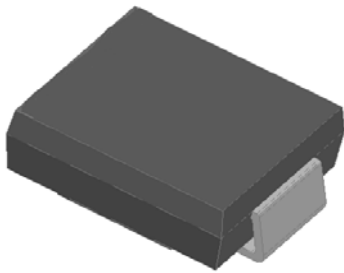
6XUIDFH 0RXQW 7UDQVLHQW 9ROWDJH 6X

8QL GLUHFWLRQDO



)HDWXUHV
 " /RZ SURILOH SDFNDJH
 " ,GHDO IRUWDXGWSRQDFHPHQW
 " \$YDLODEOH LQ 8QL GLUHFWLRQDO DQG %L
 " : SHDN SXOVH SRZHUWDSDELOLWV ZDYH
 " ([FHOHQW FODPSLQJ FDSDELOLW
 " 9HU\ IDVW UHVSQRVH WLPH
 " /RZ LQFUHPHQWDO VXUJH UHVLVWDQFH
 " 0HHWV 06/ OHYHO SHU - 67' & /) PD[LXP
 RI f&
 " (6' SURWHFWLRQRDSDUWGDQGHWZLWK ,(&
 W N9 \$LU N9 &RQWDF
 " 3DUW QR ZLWKHDXQVL\$(% 4 TXDOLILHG

%L GLUHFWLRQDO



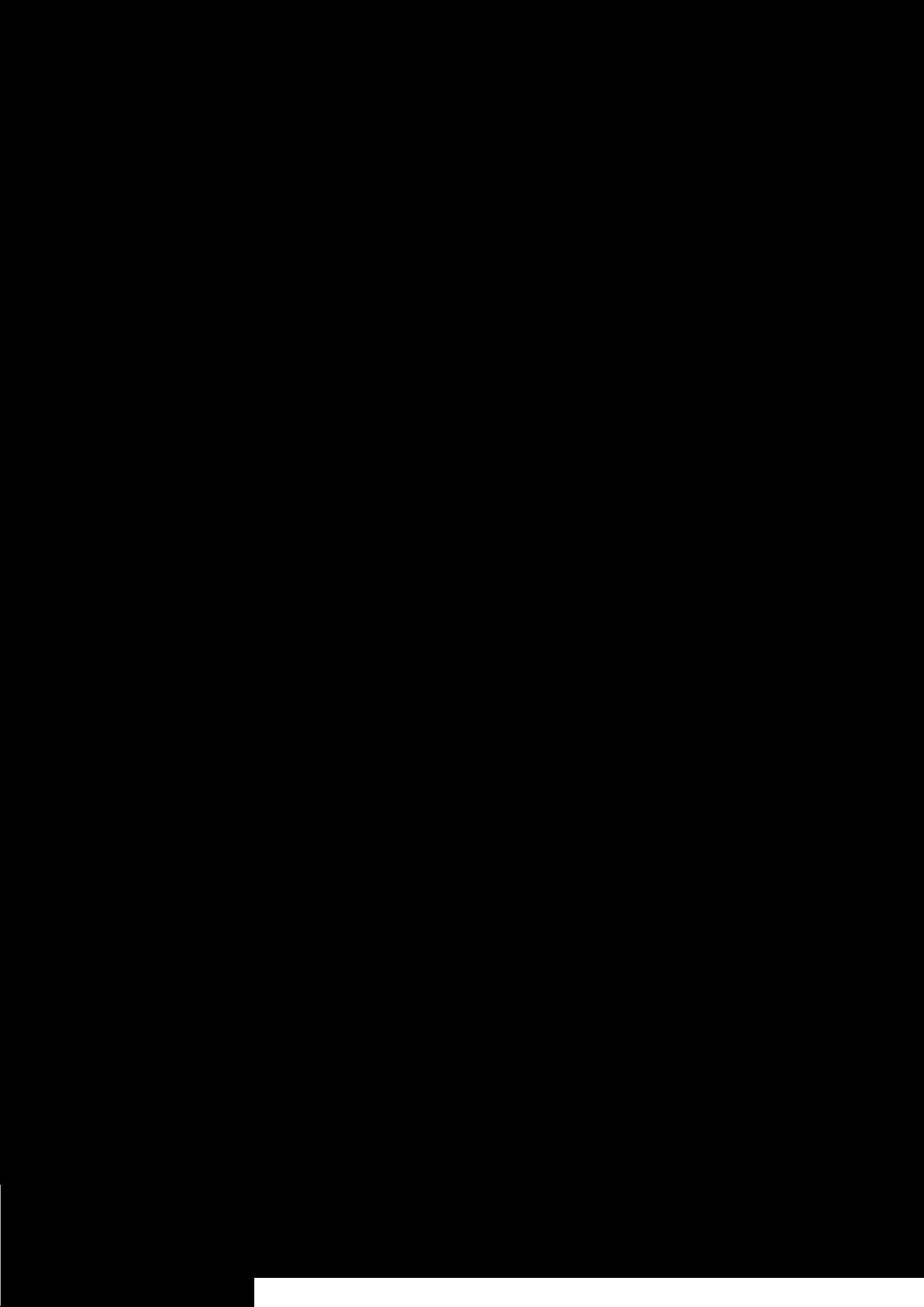
7\SLFDO \$\$\$OLFDFWLRQV
 8VH LQ VHQVLWLYH HOHFWURQLFV SURWHFW
 LQGXFHG E\ LQGXFWLYH ORDG VZLWFKLQJ D
 VLJQDO OLQHV RI VHQVRU XQLWV IRU FRQV
 DXWRPRWLYH WHOHFRPPXQLFDWLRQ
 0HFKDQLFDO 'DWD
 " 3DFNDJH \$% 60&
 0ROGLQJ FRPSRQGGPHWVPPDELOLW\
 UDWLQJ 5R+6 FRPSOLDQW KDORJHQ IUHH
 " 7HUPLQDWWH WLQ SODWHG OHDGV VROGHU
 - 67' DQG -(6' %
 " 3RODUWU XQL GLUHFWLRQDO W\SHV WKH ED
 HQG QR EDUWGLUHFWLRQDO W\SHV

V0D[LPXP 5DWDDQJV 8QOHVV RWKHU\LVH VSHFLILHG

3\$5\$(7(5	6<0%2/	81,7	0D[
3HDN SRZHU GLVVLSDWLRQ ZLWKD)LJ XV ZDYHIRUP ₃₃₀ 3	:		
3HDN SXOVH FXUUHQW ZLWK D XV ZDYHIRUP	330	\$	6HH 1H[W 7DEOH
3RZHU GLVVLSDWLRQ RQ LQILQLWH KHDW VLQN DW 7 3			:
3HDN IRUZDUG VXUJH FXLQDQWKDOI VLIQHWZRYHOXRRQL ₆₀		\$,
2SHUDWLQJ MXQFWLRQ	7.		WR
6WRUDJH WHPHUDWXUH UDQJH	67*	-	7 WR

v(OHFWULFDO &K\UDFWHSDUWVFRWKHU\LVH VSHFLILHG

3\$5\$(7(5	6<0%2/	81,7	9\$/8(
0D[LPXP LQVWDQWQHRXV IRUZDUG YROWDJH #DW \$ IRU XQLGLUHFWLRQDO RQO\	9,		9

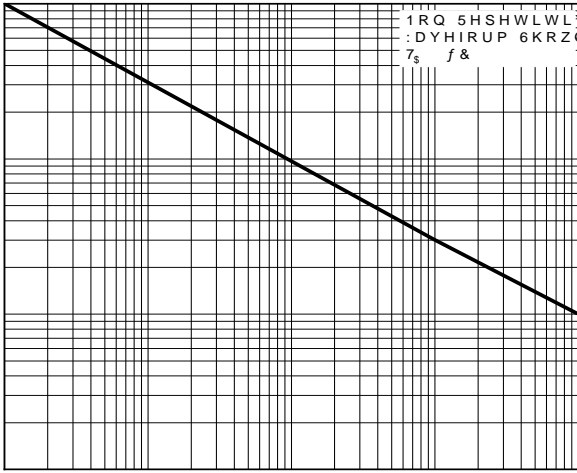




60' - \$4 7+58 60' - &\$4

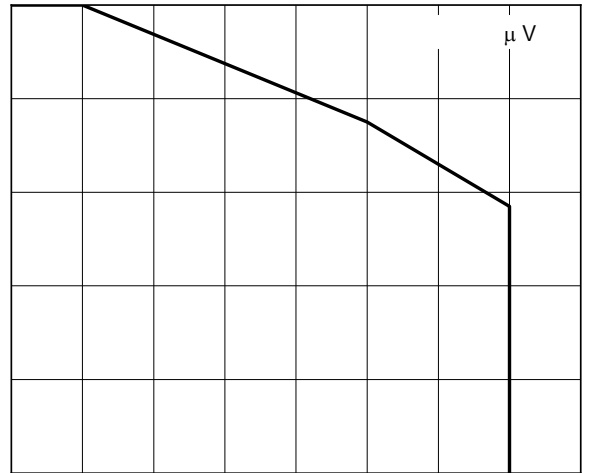
3330 3H3DN 3XOVH 3RZHU 5DWLHQW ,

)LJ 3H3DN 3XOVH 3RZHU 5DWLHQW ,



3330 3H3DN 3XOVH 3RZHU 5DWLHQW ,

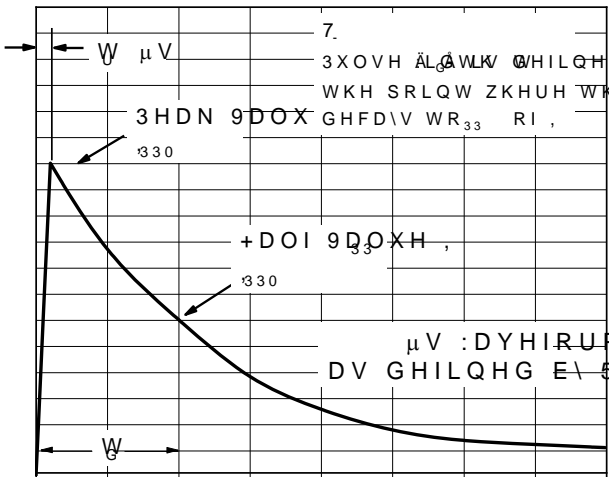
3H3DN 3XOVH 3RZHU 5DWLHQW ,



7. f&

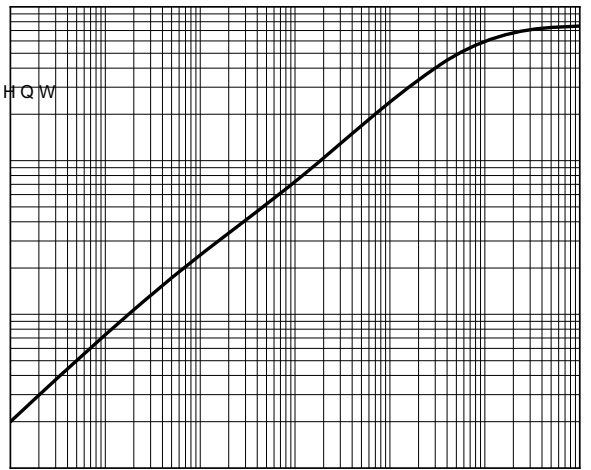
3H3DN 3XOVH 3RZHU 5DWLHQW ,

)LJ 3XOVH :DYHIRUP



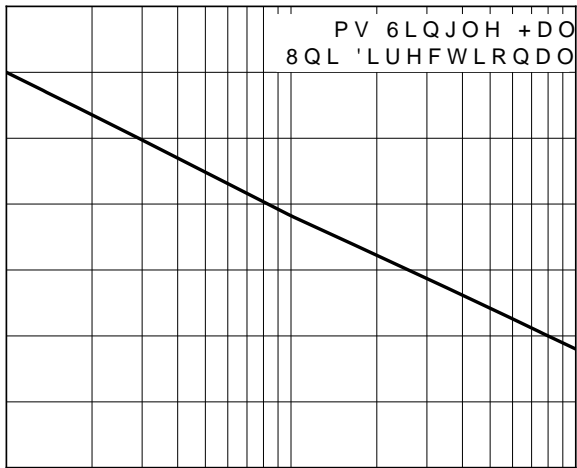
7LPH PV

)LJ 7\SLFDQWUDQJLPHDO ,PSHGDC

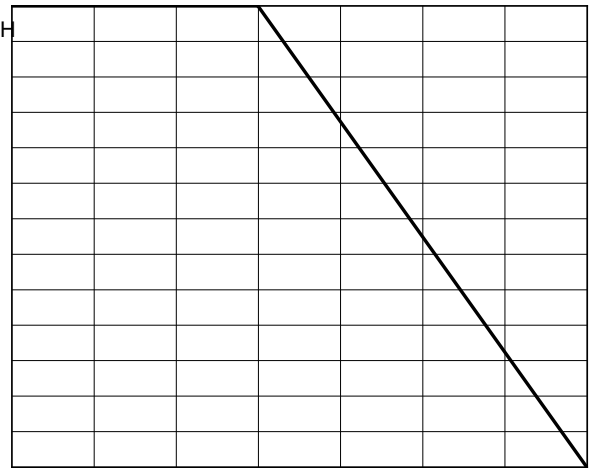


WS 3XOVH 'XUDWLRQ V

)LJ 0D[LPXP 1RQ 5HSHWLWLYH)RUZDUG 6XUJH J&X 6WHHDG \ 6WDWH 3RZHU 'HUDV



1XPEHU RI &\FOHV DW +]



/HDG 7HPSH\DWXUH 7

6 6
5HY

\$SU

<DQJ]KRX <DQJMEH HOKGWRQL&R /WZZZ \DQJMLH F

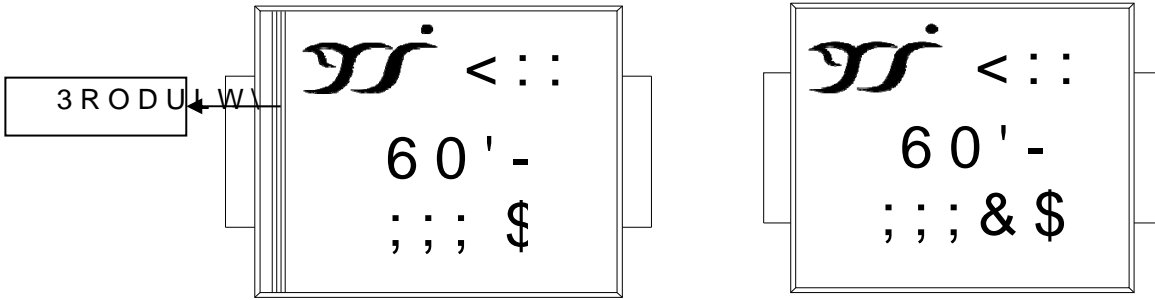


60' - \$4 7+58 60' - &\$4

v0DUNLQJ ,QIRUPDWLRQ

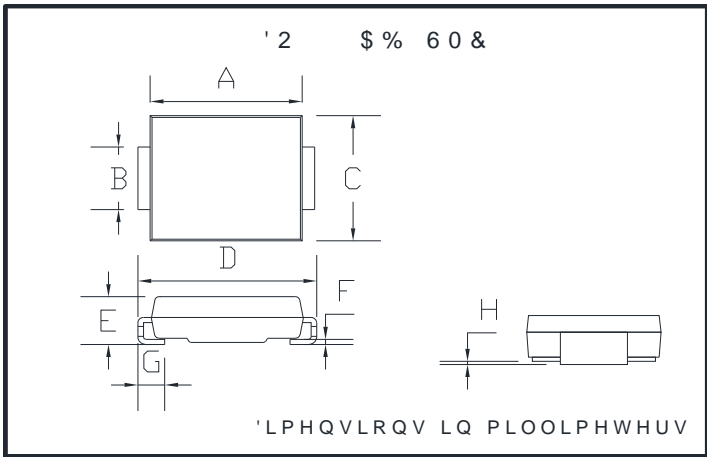
8QL GLUHFWRQDO

%L GLUHFWRQDO



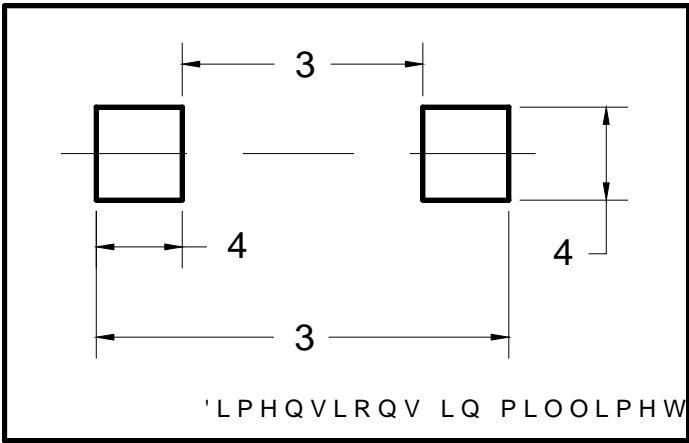
1RWH
 \$OO PDUNLQJ LV DW PLGGOH RI WKH SURGXFW ERG\
 \$OO PDUNLQJ LV LQ ODVHU SULQWLQJ
 ;;; LV PDUNLQJ FRGH OLNH \$ &\$PDUNLQJ FRGH LV
 %RG\ FRORU %ODFN
 <:: LV GDWH FRGH '3<' LV \HDU '3::' LV ZHHN
)RU LQVWDQFH
 7KH^{WK} ZHHN RI GDWH FRGH LV
 7KH^{WK} ZHHN RI GDWH FRGH LV

v2XWOLQH 'LPHQVLRQV



'2	\$%	60&
'LP	0LQ	0D
\$		
%		
&		
'		
(
)		
*		
+		

v 6XJJHVWHG SDG OD\RXW



'LP	7\8
3	
3	
4	
4	

