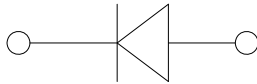
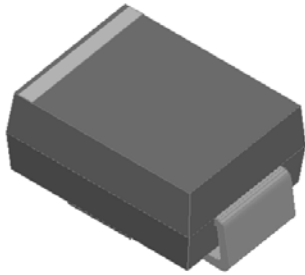




Surface Mount Transient Voltage Suppressors

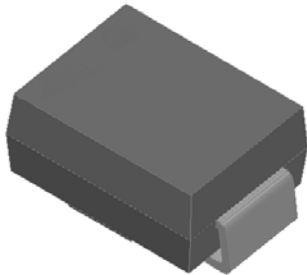
Uni-directional



Features

-
-
-
-
-

Bi-directional



Typical Applications

Mechanical Data

- Package
- Terminals
- Polarity:

Maximum Ratings

PARAMETER	SYMBOL	UNIT	Max

Electrical Characteristics

PARAMETER	SYMBOL	UNIT	VALUE



SMAJ5.0AQ THRU SMAJ190CAQ

Thermal Characteristics

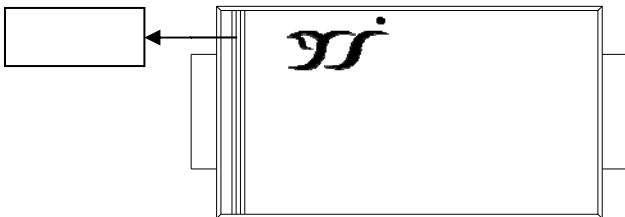
PARAMETER	SYMBOL	UNIT	Conditions	VALUE

Ordering Information

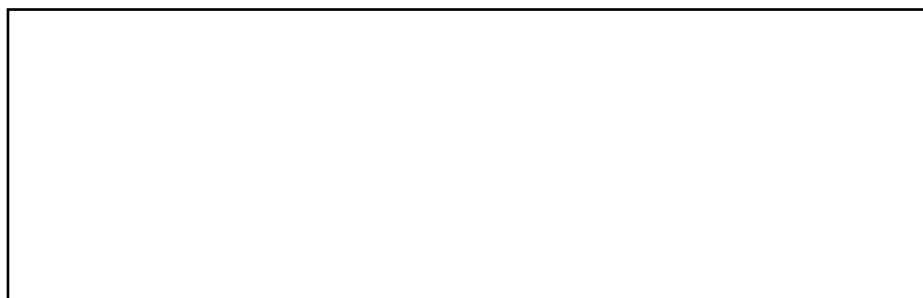
PREFERED P/N	PACKAGE CODE	UNIT WEIGHT(g)	MINIMUM PACKAGE(pcs)	OUTER CARTON QUANTITY(pcs)	DELIVERY MODE

Marking Information

Uni-directional



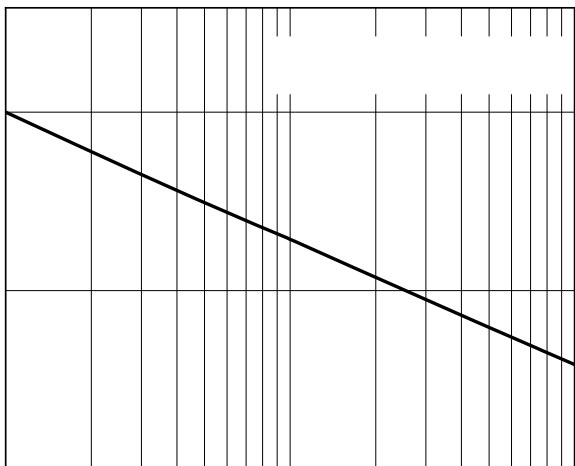
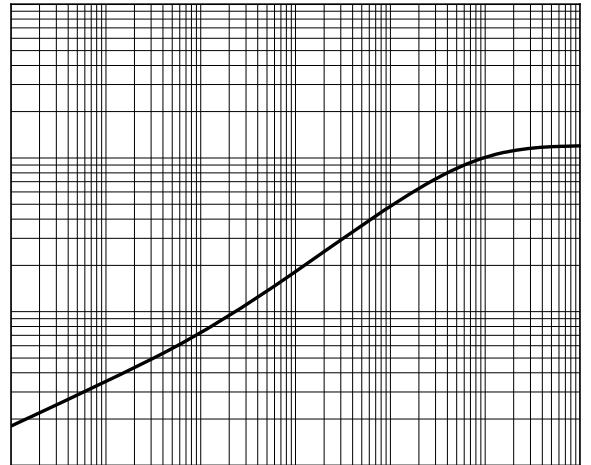
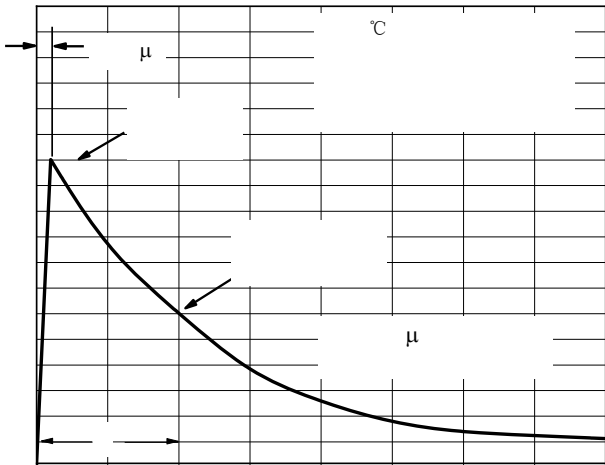
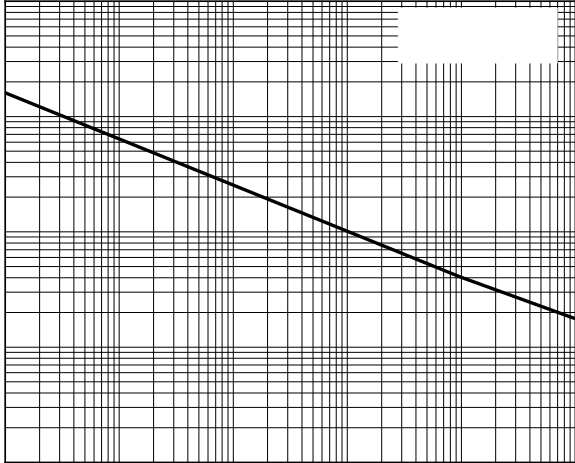
Bi-directional





SMAJ5.0AQ THRU SMAJ190CAQ

Characteristics





SMAJ5.0AQ THRU SMAJ190CAQ

Disclaimer
